



AL HADAF
MARINE SERVICES

Table of Content

3	Chairman's Message	15	Our Partners & Chart
4	About Us	16	HSE & Project Safety Plan
5	Mission & Vision	17	HSE Plan Elements and Interface Documents
6	Towing Operations	18	Projects
7	Supply Operations	19-24	DP Vessels List
8	Dredging Operations	25-26	AHTS Vessels
9	Research & Survey Operations	27-39	Speed Boats List
	Unique Equipment		
10	Projects Management		
11	Hiring Offshore Personnel		
12	Marina Services & Chartering		
13	Diving Services		
14	QHSE/ Certificate		



SUCCESS DRIVEN
MARINE SERVICES



S H I P

Y O U R

D R E A M S

T O

T H E

N E X T

L E V E L

Chairman's Message

*Our promise to our customers remains unchanged:
high expertise to deliver fast, reliable and
innovative solutions for projects of all sizes.*

Al Hadaf Marine Services' management team is built on a foundation of several decades of collective experience in servicing oil and gas off-shore contracts, known to be the most demanding in terms of their complexity and time-sensitive nature.

We have an impressive safety record and a track record of executing the most complex projects within precise schedules and budgets to deliver optimum results to meet our client's requirements. Furthermore, the best standards have been applied, without compromise, to all the sectors to ensure all our customers benefit the most out of their experience, and get the most out of their investments.

We are a performance driven company that invests in people and maximizes the value of our resources to meet our targets today and tomorrow.

Our service team is recognized for its experience and knowledge and ability to support not only our vessels, but our client's businesses as well.

Having said that, we utilize our subject matter expertise across all maritime disciplines to assist clients with internal marine assurance requirements for legislative, regulatory and industry standard compliance.

Al Hadaf Marine Services is called upon to provide consultation regarding marine supplies, fabrication, engineering and design and is also available to manage third party vessels.

Hamad Abdul Karim Al Kuwaiti

Chairman

About Us

OUR LONG HISTORY IN MARINE LOGISTIC SERVICES IS THE CORE OF OUR OPERATIONS **TODAY.**

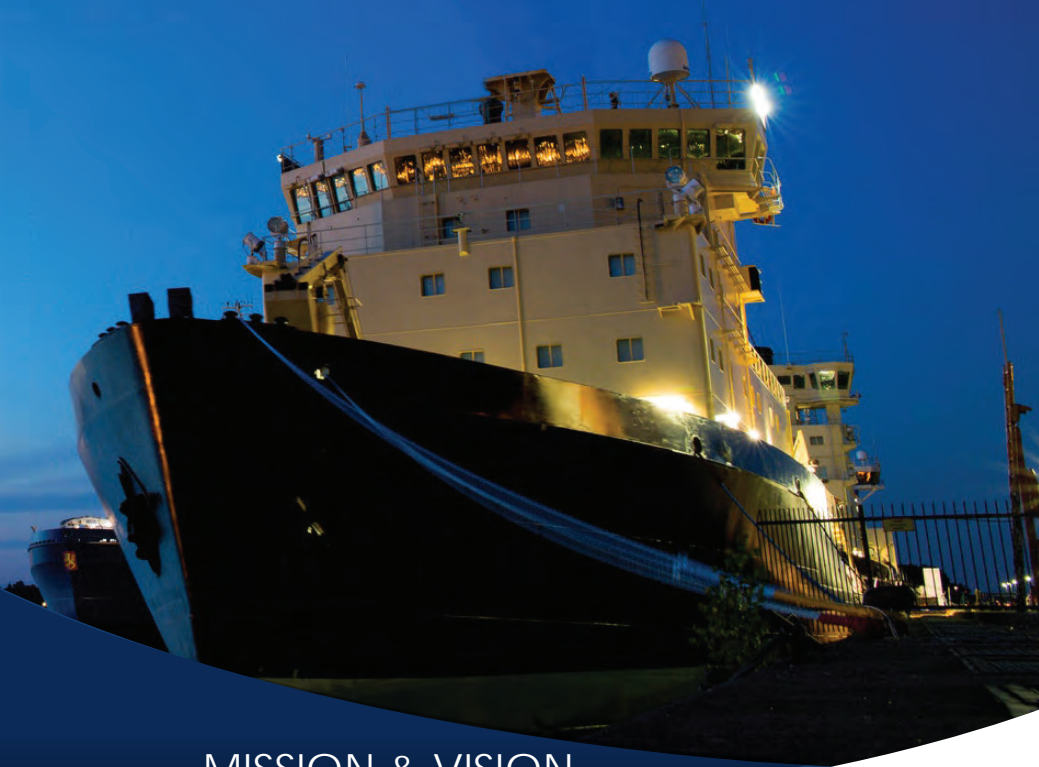
Al Hadaf Marine Services, previously was "Al Hadaf Commercial Ships Rental", is established in 2016 with our headquarter office located in Abu Dhabi. We offer a broad range of marine related services to the booming marine/offshore industry in UAE specially projects related to Oil & Gas fields.

We are striving for continued service excellence in the provision of various vessels. We own/operate a growing fleet of highly specialized and quality marine vessels within UAE. To date, we have relations with several domestic operations companies, not only to aid with the construction process of our dedicated marine vessels but to also service any other operational requirements in the region.

"Al Hadaf Marine Services" is able to supply quality vessels that are easily to be approved by ADNOC vetting and national regulations. Depending on our client's lead time to marine project requirements, we also have the ability to construct/modify our marine vessels to meet the specific requirements of our clients.

Currently, "Al Hadaf Marine Services" owns and operates a modern fleet of vessels comprising of Crew Boats, Offshore Support Vessels. We are establishing a good track to be recorded over the upcoming operational years and our targeted client includes oil and gas companies, logistics/material handling companies as well as locally established companies that are involved in marine related construction, offshore support, and coastal dredging works. We at "Al Hadaf Marine Services" are committed to provide our esteemed clients a level of quality services that are unparalleled to other vessels providers.

DELIVER RESULTS
EXCEED EXPECTATIONS
MOTIVATE TEAMWORK



MISSION & VISION

OUR MISSION

We are known for being highly responsive to project and client requirements. We have direct lines of communication that facilitate quick decision-making and we are willing to work with clients in new and innovative ways to satisfy their growing needs. We believe in leveraging and pursuing new technologies and are driven to produce powerful, best value solutions.

OUR VISION

Our promise to our customers remains unchanged: high expertise to deliver fast, reliable and innovative solutions for projects of all sizes, internationally. We have currently expanded to reach the region, and Asia, and will continue to expand in the near future to operate and serve the globe in all aspects of the marine industry.

Al Hadaf Activities



Towing Operations

AL-HADAF has engaged in overseas towing operations from and to Egypt or across different countries and has conducted operations for numerous jack-up rig moves and barge tows in the Gulf of Suez and the Mediterranean Sea relying on our AHTS vessels, including: AHTS Pegasus 2, AHTS Sea King and AHT Sea Shield.



Supply Operations

AL-HADAF provides supplies using vessels like Samos, with 3,600 BHP and anchor handling capabilities of up to 20-tons; PSV MV Secret with 3,600 BHP, in addition to the recently built, medium size supply boat, Sea-Prince, to be used as utility and mini supply vessel.

AL-HADAF is also part of a consortium agreement with a Middle East offshore supply company allowing it to expand the marketing and management of its **fleet, resources and supply operations**.

AL-HADAF provides and has managed numerous supply services operations major oil companies as a part of its operations.



Dredging Operations

AL-HADAF managed a near-shore dredging operation with Impresub, utilizing flat top barge, Nassef 4, to mobilize with Impresub's dredging machine to bury 26" pipeline in Port Said for Petrobel.

AL-HADAF will provide a Project Execution Plan that will cover both Quality and HSE Aspects of work activities. A Project HSE Plan will be prepared especially for the project and will be bridged to the client's.

HSE System with an interface document.

The Project Execution Plan will include a set of operation procedures prepared in accordance with industry standard practices, client technical specifications, and AL-HADAF QA system and standard work instructions.



Research and Survey Operations

AL-HADAF started its marine business providing the local market with survey and research vessels utilizing company-owned MV Runner to successfully attract other survey companies owning research vessels but with an unsatisfactory capability, to provide it's vessels to carry out marketing and management, for example:

MV Explorer – which was owned by IXSea (a French company).

Unique Equipment

AL-HADAF specializes in providing unique equipment considered rare to find or provide , such as amphibious cranes.



Projects Management

A dedicated point of contact is provided for each project AL-HADAF vessels are engaged with. This point of contact is responsible for drafting an outline Project Execution Plan that will cover both quality and HSE aspects of work activities and comply to the client outline requirements.

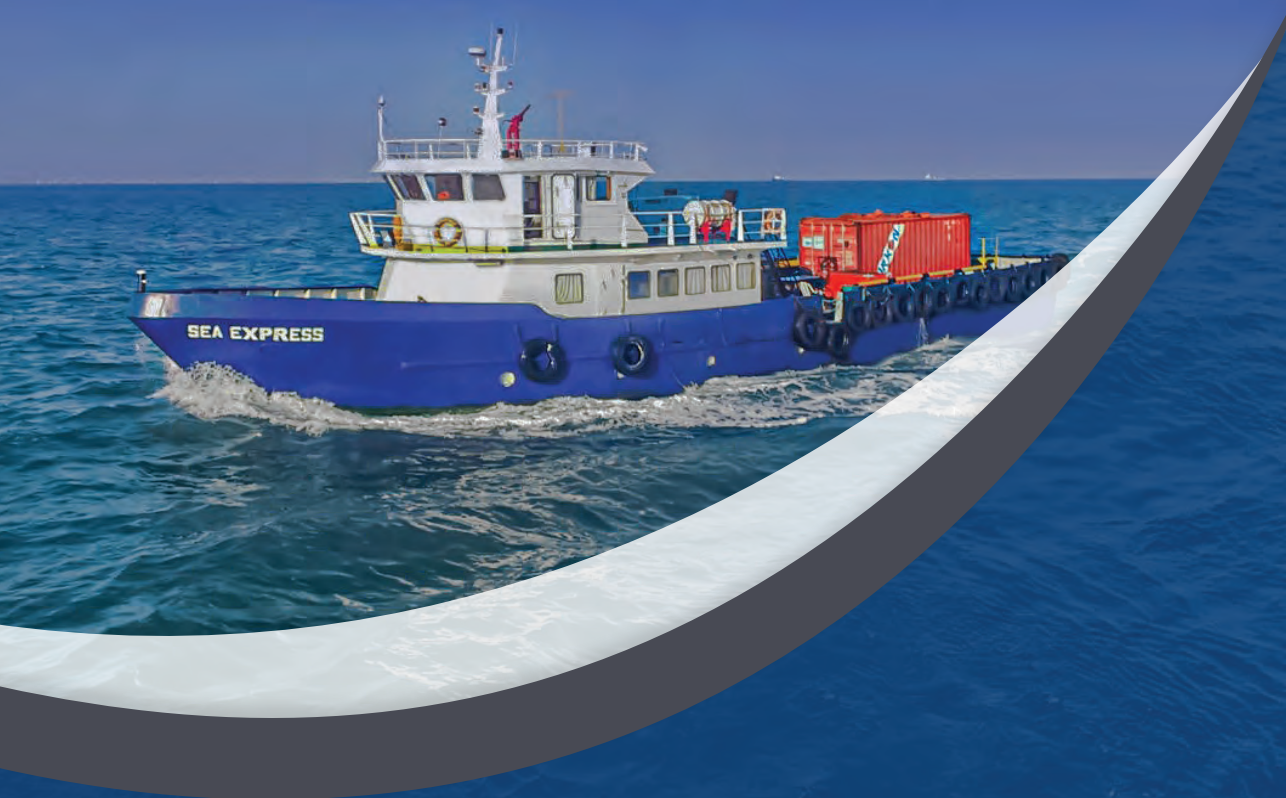
A Project HSE Plan will be prepared customized for each project subject, for each type of operation, as mentioned in the above clause.

Project Documentation

AL-HADAF will provide a Project Execution Plan that will cover both Quality and HSE Aspects of work activities. A Project HSE Plan will be prepared especially for the project and will be bridged to the client's.

HSE System with an interface document.

The Project Execution Plan will include a set of operation procedures prepared in accordance with industry standard practices, client technical specifications, and AL-HADAF QA system and standard work instructions.

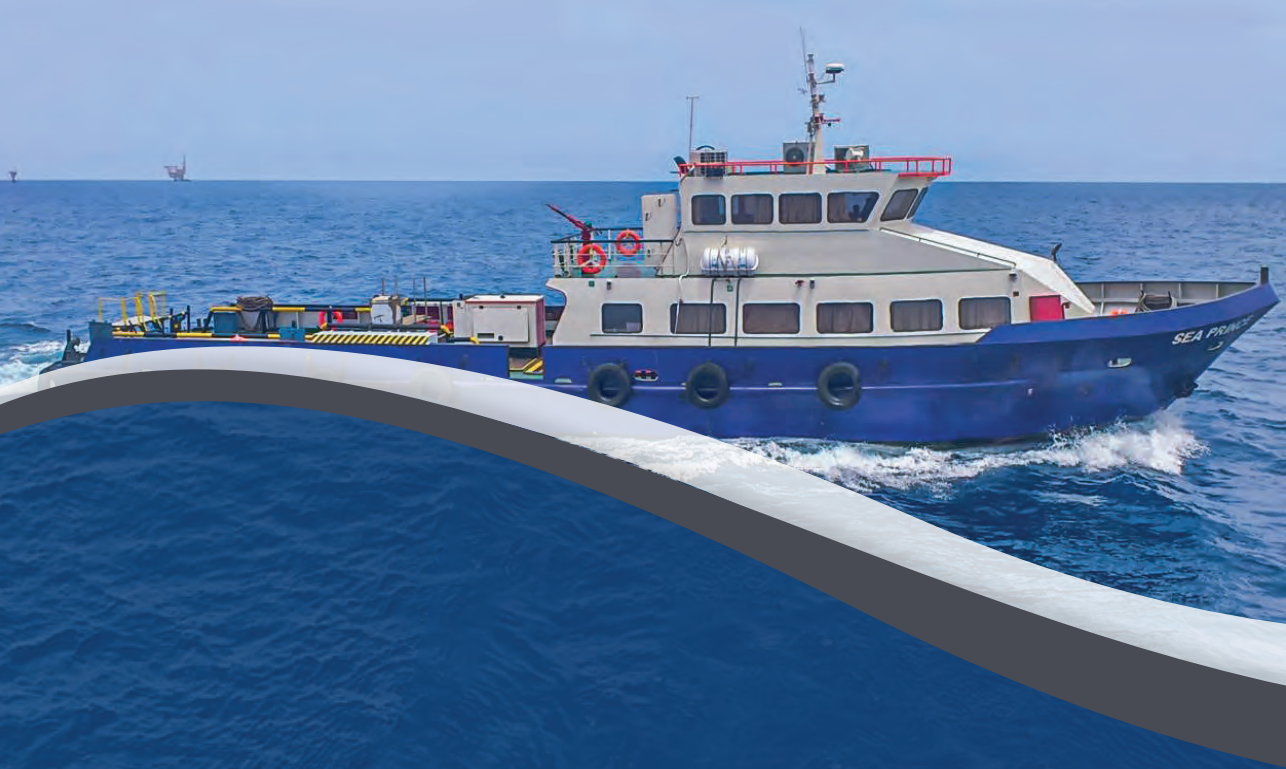


AL-HADAF quality system is described and defined by 4 basic of documents:

- Quality Assurance Manual
- Quality Assurance Procedures
- Standard Work Instructions
- Project Execution Plans and Procedures

Hiring Offshore Personnel

Al Hadaf Marine Services is also providing a wide range of offshore personnel such as, client representative, Marine Warranty Surveyors, Subsea Inspection Engineers, HSE/Diving Safety Officers, Marine Advisors, Marine Crew, Diving Personnel, ROV personnel, etc.



Marine Services & Chartering

Chartering a fleet of offshore support vessels that includes:

- Work boat/Utility vessel/Diving support vessel
- Anchor Handling Tug (AHT)
- Anchor Handling Tug and Supply vessel (AHTS)
- Crew Boat
- Accommodation barge
- Cargo barge and Tug
- Land craft
- Jack up barge
- Speed boats



Diving Services

Providing diving services to offshore oil & gas industry:

- IMR for offshore structures and pipelines
- Installation of offshore facilities
- General diving services
- Subsea inspection, cleaning and maintenance of vessels hull and drilling rigs
- Demolition and removal of underwater structures/facilities

Providing diving services to civil marine construction industry:

- Inspection, Maintenance and Construction of jetties, harbors and breakwaters
- Inspection, Maintenance and Construction of water intakes

QHSE

Quality-Health-Safety-Environment & CERTIFICATION

Al Hadaf Marine Services QHSE has been developed and continuously improved in accordance with regulations and standards of:

- 1- ISO 9001: 2015
- 2- ISO 14001: 2015
- 3- ISO 45001: 2018
- 4- IMCA Standards
- 5- ISM Code

Applus⁺
VQMI

ISO 9001:2015 C641
ISO 14001:2015 E195
MGMT. SYS. CERTIFIED



CB-039-MS/1

Applus⁺
VQMI

ISO 45001:2018 OHS198
MGMT. SYS. CERTIFIED



**BUREAU
VERITAS**



ICV
IN-COUNTRY VALUE
CERTIFIED



OUR PARTNERS



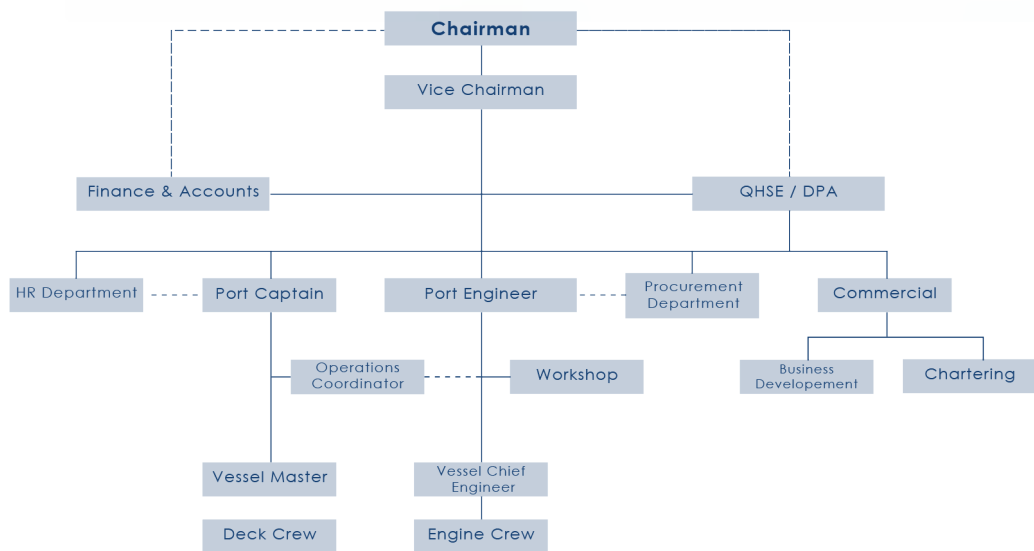
أدنوك
ADNOC



شركة الجرافات
البحرية الوطنية
NATIONAL MARINE
DREDGING COMPANY



ORGANIZATION CHART



Health, Safety and Environment (HSE)

AL-HADAF works through a Health and Safety Management System (HSEMS) covering all vessel operations. The HSEMS is a structured method of assessing and managing hazards and risks that may exist in any work situation company employees may find themselves in. The HSEMS is organized in four main levels:

- Policy Statements and Safety Manual: setting out corporate policies and organizational responsibilities and defining how the company complies with statutory and self determined responsibilities.
- HSE Procedures and Forms: Environmental Standards and Guidelines.
- HSE Work Instructions.
- Management Records, Stakeholder Information: HSE Interface Documents and Project Specific HSE Plans and reference documents from industry, governmental and customer organizations HSE Planning is an integral part of the system and includes Annual HSE Plan, HSE Training Plan, Risk Management and Project Specific HSE Plans.

For each project, a comprehensive Project HSE Plan is always drawn up. This plan is designed to present in an easily understandable manner all procedures, actions and information needed for the safe conduct of the project and in the case of an emergency. The Project HSE Plan includes an interface / bridging document that interfaces the FSAEHSE system and procedures with those of the Client and Sub Contractors. FSAE HSEMS is accredited to OHSAS 18001.

Project Safety Plan

The Project Safety Plan is a Controlled Document and is completed as soon as possible after the project is awarded, after carefully researching the situation in the work area as well as the activities and tasks of the project. All parties involved with the operation and management of the project are likely to have their inputs to the Plan and are issued with copies and any subsequent revisions. Distribution typically includes:

Operations Manager (onshore)
Vessel Captain (offshore)
End Clients Management (onshore)

Sub-Contractor Management (onshore)
Client Representative(s) (offshore)
Customer Management (onshore)

HSE Plan Elements and Interface Documents

The Project HSE Plan shall incorporate interface documents with the client and major subcontractors, typically the supplier of the survey vessel. This document clarifies terminology and defines the relevant rules and procedures that are used to align each HSE Management System and to ensure that roles and responsibilities of individuals are known and potential conflict or misunderstandings are solved and clarified.

- **Risk Management**

Risk Management activities are critical to the goal of achieving safe operations. In this regard, AL-HADAF maintains a Generic Risk Register and Departmental and Project-Related Generic Risk Assessments for projects, identifying all potential hazards encountered during activities, assessing the possibility of occurrence and extent of potential loss.

- **Emergency Response and Medevac Plans**

Plans are drawn up to ensure that the actions to be taken in the case of any emergency have been properly thought out, documented and made known to all concerned, including any personnel working onshore. The plans take into account the facilities available on the vessels and ashore, (especially medical facilities). Precise instructions for the evacuation of casualties are included to supplement the existing world-wide general emergency procedures.

- **HSE Audits**

Our vessels are always subject to a comprehensive HSE audit prior to and during any activities, in accordance with standard AL-HADAF guidelines and the IMCA Common Marine Inspection Document (CMID). A competent and independent outside organization will undertake the CMID audit. No vessel will be permitted to be engaged any operation/job if any major deficiency is identified during audit that has not been corrected. Records of audits will be made available to the client. Suppliers of safety-critical services and supplies shall be subject to HSE audits and HSE factors given a high priority when being selected.

Internal HSE Audits shall be undertaken of projects to ensure compliance with the HSEMS.



PROJECTS

In 2017, we partnered with National Marine Dredging Company in their projects at Um Al Naar, Ruwais, Khalifa Port, Paradise Island and Rotana Beach.

Currently, we are in partnership with National Marine Dredging Company in their on-going projects at Sea House Palace and Khalifa Port SQAW Expansion.

Future Projects:

- Hail and Ghasha Project (building multiple artificial islands)
- Yas Channel Project (Samalia Island)
- Al Yasat Island

On-Going Projects:

- Sea House Palace
- Khalifa Port SQAW Expansion Project

Completed Projects:

- Um Al Naar
- Ruwais Project
- Khalifa Port
- Paradise Island
- CBBR/Rotana Beach

Scope of work:

- Transporting passengers
- Environmental Monitoring

Duty/Timing:

- 24 Hours, 2 Shifts (morning, evening)
- Per Boat Per Shift: 1 Skipper and 1 Deck Hand

DP VESSELS

DP2 AHTS	LOA(M)	YEAR BUILT	POB	BP	BHP
Sea Pearl	63.4	2011	32	80	6140
Sea Thunder	62.85	2004	42	65	5500
DP1 AHTS	LOA(M)	YEAR BUILT	POB	BP	BHP
Sea Royal	60	2009	42	67	5220



AL HADAF MARINE SERVICES

M/V SEA PEARL

6140 BHP/80T BP/DP2/FiFi1/AHTS/SSRV

PRINCIPAL PARTICULARS

Year Built	2011
Place Built	ABG Shipyard Ltd., India
Manager	-
Flag	Marshall Island
Length Overall	63.4 m
Length BP	-
Breadth Moulded	15.6 m
Depth Moulded	6.8 m
Draft (max)	5.5 m
Freeboard (SLL)	1.3 m
Class	
Notation	DNV DNV+IA1 TUG SUPPLY VESSEL STAND BY VESSEL, FiFi 1
GRT/ NRT	1922 / 647
Deadweight	1886.2 MT
Bollard Pull	80 MT

DECK PARTICULARS

Clear Deck Area	428 m ²
Deck Carrying Load	600 T
Deck Strength	5 T/m ²

PERFORMANCE

Maximum Speed	13 Knots @ 14 T/24 hours
Service Speed	10 Knots @ 11 T/24 hours
Economic Speed	8 Knots @ 8.75 T/24 hours

PROPULSION SYSTEM

Main Engines	2 x 3070 BHP GE7 FDM 12, 2575 BHP, Total 6140 BHP,
Auxiliary Engines	General Electric
Emergency Generator	3 x 370 kW/440V/60, Volvo Penta 1 x 85 kW/440V/60, Volvo Penta
Bow Thruster	2 x 500 kW(HRP) Electric-Driven Tunnel Type 1 x 500 kW(HRP) Electric-Driven Tunnel Type
Propellers	2 x Berg, CPP with Kort Nozzle
Sewage Plant	2 x Hydraulic Type
Oily Water Sep.	2 x High Performance Streamline Type

TANK CAPACITIES

Fuel Oil	796 m ³
Fresh Water	575 m ³
Drill/Ballast Water	410 m ³
Liquid Mud	408 m ³
Brine	199 m ³
Dry Bulk	206 m ³ , 4 x 46.72 m ³ per Tank
Foam/Detergent	20/20 m ³



CARGO DISCHARGE CAPACITIES

Fuel Oil Pump	200 m ³ /hr @ 60 m head
Fresh Water Pump	200 m ³ /hr @ 60 m head
Drill Water Pump	200 m ³ /hr @ 60 m head
Liquid Mud Pump	80 m ³ /hr @ 60 m head
Bilge Pump	100 m ³ /hr @ 80 m head
Dry Bulk	50 T S / 6 BARs/HR

DECK EQUIPMENT

Anchors & Chain	2 x Anchor 1510 kg, Chain 440 m (L) x 38mm (dia) Grade U2-NORCRANE
Tugger Winch	2 x 10 T @ 15 m/min, NORCRANE
Capstan	2 x 8 T @ 15 m/min, NORCRANE
Anchor Windlass	1 x, NORCRANE, Electro-Hydraulic
Crane	1 x NORCRANE SWL 3t, 12 m Out reach

ANCHOR HANDLING & TOWING EQUIPMENT

Towing/Anchor Handling	Electro-Hydraulic Double Drum Waterfall Type 60 mm x 1200 m each, Brake Layer 150 T, Pull 1st
Winch	Speed 150 T @ 6.0 m/min,
AH/Towing Drum Cap	1200 m (L) x 60 mm (Dia) SWR
Spare Reel Drum Cap	1200 m (L) x 60 mm (Dia) SWR
Line Pull @ First Layer	150 T @ 6 m/min
Brake Holding	250 T (Static)
Towing Pin	2 x Electro-Hydraulic retractable, SWL 200mt
Shark Jaw	SWL 300 T, Electro-Hydraulic
Stern Roller	SWL 200T, 5.0 m (L) x 1.6 m (Dia)

ACCOMODATION

Berths	4 x 1, 8 x 2, 2 x 6 Berths
Total Pax	32

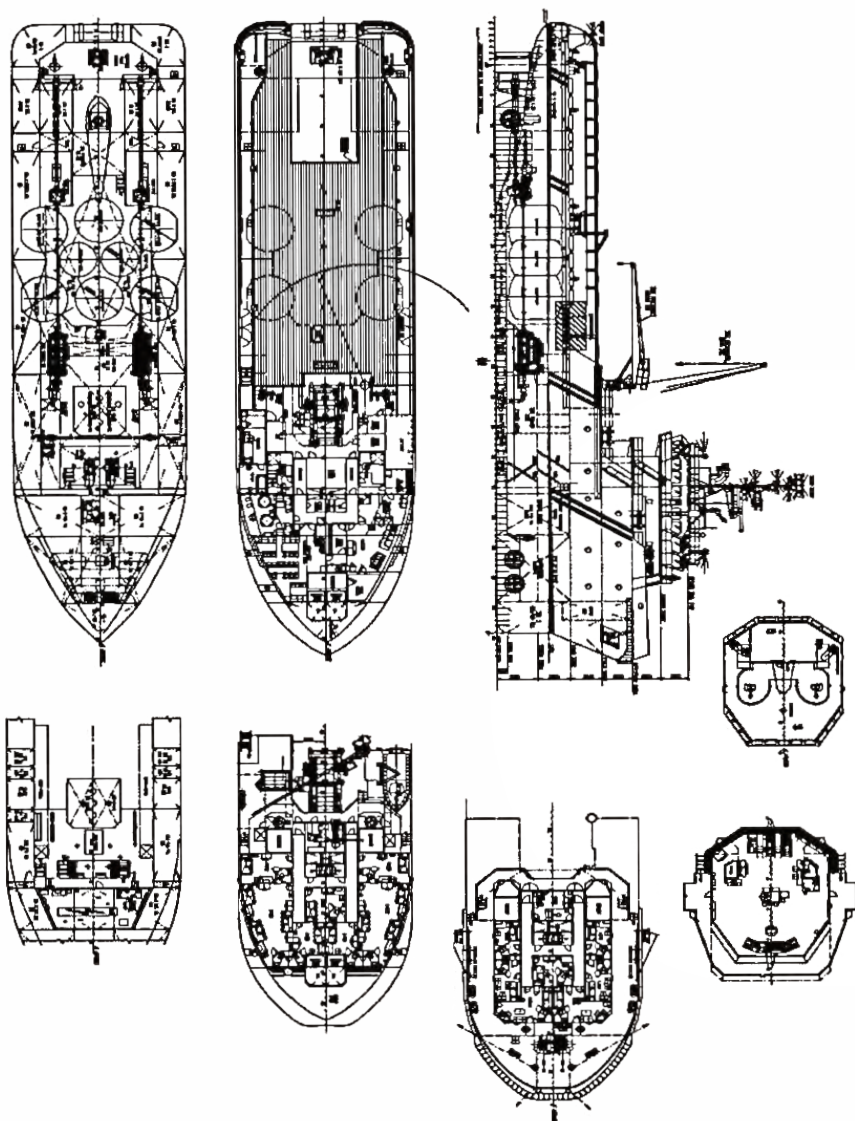
EXTERNAL FIRE-FIGHTING EQUIPMENT

Fi-Fi Notation	Class 1 with Water Curtain All Round
Fi-Fi Monitors	2 x Fi-Fi Monitors, 1560 m ³ /hr, 120 m Throw Length
Fi-Fi Pump	2 x Fi-Fi Pumps, 1560 m ³ /hr

LIFE-SAVING EQUIPMENT

Life Rafts	4 x 25 Men, SOLAS Compliant
Rescue Boat c/w Davit	1 x 9 Men FRB, 2 x 60 HP, 20 L, SOLAS Compliant

Particulars are believed to be correct but not guaranteed. Owners reserve the rights to amend the specifications without notifications.
Particulars are entirely without warranty as to interested parties must inspect vessel's certificates, drawings or physical inspection of vessel.





AL HADAF MARINE SERVICES

M/V SEA ROYAL 5220 BHP/67T BP/DP1/FiFi1/AHTS

PRINCIPAL PARTICULARS

Year Built	2009
Place Built	Fujian Crown Ocean Shipping Industry Co Ltd, China
Manager	Al Hadaf Marine Services
Flag	Sierra Leone
Length Overall	60 m
Length BP	-
Breadth Moulded	16 m
Depth Moulded	6 m
Draft (max)	5.1 m
Freeboard (SLL)	1 m
Class	RINA
Notation	Towing Vessel, AH, FiFi Class1, Offshore Support Vessel, Oil Recovery Vessel Class 1, E+AMS, DPS-1
GRT/ NRT	1706 / 511
Deadweight	1736.91 MT
Bollard Pull	67 MT

DECK PARTICULARS

Clear Deck Area	380 m ²
Deck Carrying Load	600 T
Deck Strength	5 T/m ²

PERFORMANCE

Maximum Speed	13 Knots
Service Speed	10 Knots
Economic Speed	8 Knots

PROPULSION SYSTEM

Main Engines	2 x 2610 BHP @ 750 rpm, Yanmar 6EY26, Total 5220 BHP,
Auxiliary Engines	2 x 275 kW/415V/50, Caterpillar, C18
Emergency Generator	1 x 93.6 kW/415V/50, Caterpillar, C4.4
Bow Thruster	1 x 8 t, Shottel STT2, CPP, Electric-Driven Tunnel
Stern Thruster	1 x 8 t, Shottel STT2, CPP, Electric-Driven Tunnel
Propellers	2 x Berg, CPP with Kort Nozzle
Sewage Plant	1 x 40 Person Capacity, Make: SBT-40
Oily Water Sep.	1 m3 per hr with 15 ppm alarm

TANK CAPACITIES

Fuel Oil	530 m ³
Fresh Water	460 m ³
Drill/Ballast Water	477 m ³
Liquid Mud	200 m ³
Brine	185 m ³
Dry Bulk	160 m ³
Foam/Detergent	10.6/10.6 m ³



CARGO DISCHARGE CAPACITIES

Fuel Oil Pump	1 x 100 m ³ /hr @ 75 m head
Fresh Water Pump	1 x 100 m ³ /hr @ 75 m head
Drill Water Pump	200 m ³ /hr @ 60 m head
Liquid Mud Pump	2 x 80 m ³ /hr @ 75 m head
Bilge Pump	50 m ³ /hr @ 80 m head
Dry Bulk	20.5 m ³ @ 6 Bar air Pressure

DECK EQUIPMENT

Anchors & Chain	2 x Anchor 1590 kg, Chain 412 m (L) x 38mm (dia)
Tugger Winch	2 x 10 T @ 15 m/min, Plimsoll
Capstan	2 x 5 T @ 15 m/min, Plimsoll
Anchor Windlass	1 x 6.6t @ 12m, Plimsoll
Crane	1 x NORCRANE SWL 3t, 12 m Out reach

ANCHOR HANDLING & TOWING EQUIPMENT

Towing/Anchor Handling	1 x Double drum Electro-Hydraulic Waterfall Plimsoll, 200 tones line pull and 250 brake
Winch	1000m x 56mm each
AH/Towing Drum Cap	1000 m (L) x 56 mm (Dia) SWR
Spare Reel Drum Cap	1000m x 56mm each
Line Pull @ First Layer	150 tones
Brake Holding	250 T (Static)
Towing Pin	SWL 300 T, Electro Hydraulic, Plimsoll
Shark Jaw	SWL 300 T, Electro-Hydraulic, Plimsoll
Stern Roller	SWL 375 T, 4.2 m (L) x 1.6 m (Dia)

ACCOMMODATION

Berths	4 x 1, 5 x 2, 3 x 4 Berths
Total Pax	26 + Hospital

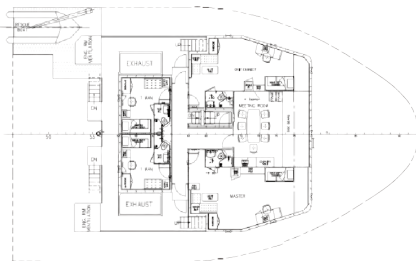
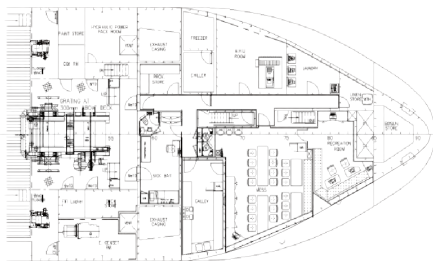
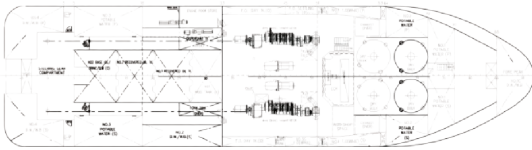
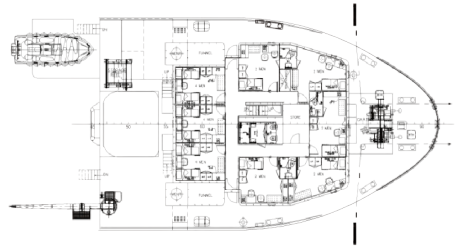
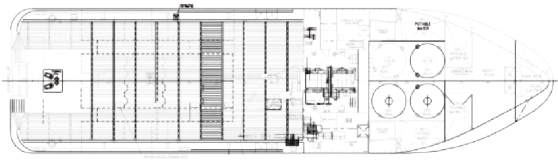
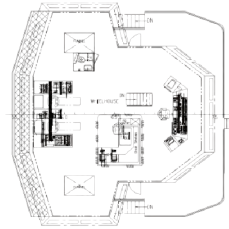
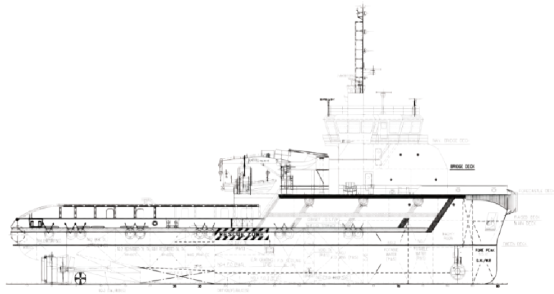
EXTERNAL FIRE-FIGHTING EQUIPMENT

Fi-Fi Notation	Class 1 with Water Curtain All Round
Fi-Fi Monitors	2 x Fi-Fi Monitors, 1200 m ³ /hr, 120 m Throw Length
Fi-Fi Pump	2 x Fi-Fi Pumps, 1200 m ³ /hr

LIFE-SAVING EQUIPMENT

Life Rafts	4 x 25 Men, SOLAS Compliant
Rescue Boat c/w Davit	1 x 15 Men FRB inboard engine + 1 6 men with outboard engine

Particulars are believed to be correct but not guaranteed. Owners reserve the rights to amend the specifications without notifications.
Particulars are entirely without warranty as to interested parties must inspect vessel's certificates, drawings or physical inspection of vessel.





AL HADAF MARINE SERVICES

M/V SEA THUNDER 5500 BHP/65T BP/FiFi1/DP2/AHTS/SSRV

PRINCIPAL PARTICULARS

Year Built	2004
Place Built	Guangzhou nan fang Shipyard
Manager	Al Hadaf Marine Services
Flag	Sierra Leone
Length Overall	62.85 m
Length BP	-
Breadth Moulded	14.95 m
Depth Moulded	6.1 m
Draft (max)	5.12 m
Freeboard (SLL)	1.0 m
Class	BV
Notation	A1, Towing Vessel, Fire Fighting Vessel Class 1, (E), AMS, DPS-2
GRT/ NRT	1772 / 531
Deadweight	1600 T
Bollard Pull	65 MT

DECK PARTICULARS

Clear Deck Area	400 m ²
Deck Carrying Load	800 T
Deck Strength	7 T/m ²

PERFORMANCE

Maximum Speed	13 Knots
Service Speed	10 Knots
Economic Speed	

PROPULSION SYSTEM

Main Engines	2 x 2050 KW, Wartsila 6L26A
Auxiliary Engines	2 x Caterpillar 3408 C
Emergency Generator	1 x 60 kW/440V/60
Bow Thruster	1 x 5 t, Tunnel Type
Propellers	2 x CPP with Kort Nozzle
Sewage Plant	1 x 50 Person Capacity, Make: SBT-40
Oily Water Sep.	1 m ³ per hr with 15 ppm alarm

TANK CAPACITIES

Fuel Oil	570 t
Fresh Water	420 m ³
Drill/Ballast Water	400 t
Liquid Mud	410 m ³
Brine	200 m ³
Dry Bulk	200 m ³
Foam/Detergent	10.6/10.6 m ³



CARGO DISCHARGE CAPACITIES

Fuel Oil Pump	1 x 100 m ³ /hr @ 75 m head
Fresh Water Pump	1 x 100 m ³ /hr @ 75 m head
Drill Water Pump	100 m ³ /hr @ 75 m head
Liquid Mud Pump	1 x 100 m ³ /hr @ 75 m head
Bilge Pump	50 m ³ /hr @ 80
Dry Bulk	2.0 m ³ /min @ 6.2 Bar air Pressure

DECK EQUIPMENT

Anchor & Chain	2 x Anchor 1590 kg, Chain 412 m (L) x 38mm (dia)
Tugger Winch	2 x 10 T @ 15 m/min
Capstan	2 x 5 T @ 15 m/min
Anchor Windlass	1 x 9t @ 12m
Crane	1 x SWL 3t, 5 m Out reach

ANCHOR HANDLING & TOWING EQUIPMENT

Towing/Anchor Handling	1 x Double drum Electro-Hydraulic Waterfall, 150 tones line pull and 200 brake
Winch	1200m x 52mm each
AH/Towing Drum Cap	1200 m (L) x 52 mm (Dia) SWR
Spare Reel Drum Cap	1200m x 52mm each
Line Pull @ First Layer	150 tones
Brake Holding	225 T (Static)
Towing Pin	SWL 300 T, Electro Hydraulic
Shark Jaw	SWL 300 T, Electro-Hydraulic
Stern Roller	SWL 250 T, 3.5 m (L) x 1.6 m (Dia)

ACCOMODATION

Berths	4 x 1, 3 x 2, 8 x 4 Berths
Total Pax	42 + Hospital

EXTERNAL FIRE-FIGHTING EQUIPMENT

Fi-Fi Notation	Class 1 with Water Curtain All Round
Fi-Fi Monitors	2 x Fi-Fi Monitors, 1200 m ³ /hr, 120 m Throw Length
Fi-Fi Pump	2 x Fi-Fi Pumps, 1637 m ³ /hr

LIFE-SAVING EQUIPMENT

Life Rafts	6 x 25 Men, SOLAS Compliant
Rescue Boat c/w Davit	1 x FRC with outboard engine

Particulars are believed to be correct but not guaranteed. Owners reserve the rights to amend the specifications without notifications. Particulars are entirely without warranty as to interested parties must inspect vessel's certificates, drawings or physical inspection of vessel.

AHTS VESSEL

ANCHOR HANDLING TUG SUPPLY VESSEL

AHTS	LOA(M)	YEAR BUILT	POB	BP	BHP
Sea Champion	58.7	2006	43	62	5150



AL HADAF MARINE SERVICES

M/V SEA CHAMPION 5150 BHP/62T BP/FiFi1/AHTS/SSRV

PRINCIPAL PARTICULARS

Year Built	2006
Place Built	Guangzhou nan fang Shipyard
Manager	Al Hadaf Marine Services
Flag	Sierra Leone
Length Overall	58.7 m
Length BP	-
Breadth Moulded	14.6 m
Depth Moulded	5.5 m
Draft (max)	4.8 m
Freeboard (SLL)	0.7 m
Class	BV
Notation	BV Class 1 Hull + Mach, Supply Unrestricted Navigation FiFi 1
GRT/ NRT	1470 / 441
Deadweight	1500 T
Bollard Pull	62 MT

DECK PARTICULARS

Clear Deck Area	350 m ²
Deck Carrying Load	500 T
Deck Strength	7 T/m ²

PERFORMANCE

Maximum Speed	13 Knots @ 13.3 t/d
Service Speed	10 Knots @ 11.8 t/d
Economic Speed	0.5 t/d

PROPULSION SYSTEM

Main Engines	2 x 2575 BHP, Total 5150 BHP
Auxiliary Engines	3 x 315 kW/415V/50, Caterpillar, C18
Emergency Generator	1 x 52 kW/415V/50, Caterpillar, C4.4
Bow Thruster	1 x 5 t, Shottel STT2, CPP, Electric-Driven Tunnel 1 x 5t/day, Reverse Osmosis
Propellers	2 x CPP with Kort Nozzle
Sewage Plant	1 x 50 Person Capacity, Make: SBT-40
Oily Water Sep.	1 m ³ per hr with 15 ppm alarm

TANK CAPACITIES

Fuel Oil	720 t
Fresh Water	464 m ³
Drill/Ballast Water	200 t
Liquid Mud	225 m ³
Brine	200 m ³
Dry Bulk	200 m ³
Foam/Detergent	10.6/10.6 m ³



CARGO DISCHARGE CAPACITIES

Fuel Oil Pump	1 x 100 m ³ /hr @ 60 m head
Fresh Water Pump	1 x 100 m ³ /hr @ 60 m head
Drill Water Pump	100 m ³ /hr @ 60 m head
Liquid Mud Pump	2 x 85 m ³ /hr @ 60 m head
Bilge Pump	50 m ³ /hr @ 80 m head
Dry Bulk	15.2 m ³ @ 6 Bar air Pressure

DECK EQUIPMENT

Anchors & Chain	2 x Anchor 1590 kg, Chain 412 m (L) x 38mm (dia)
Tugger Winch	2 x 10 T @ 15 m/min
Capstan	2 x 5 T @ 15 m/min
Anchor Windlass	1 x 9t @ 12m
Crane	1 x SWL 3t, 5 m Out reach

ANCHOR HANDLING & TOWING EQUIPMENT

Towing/Anchor Handling	1 x Double drum Electro-Hydraulic Waterfall, 150 tones line pull and 200 brake
Winch	1000m x 56mm each
AH/Towing Drum Cap	1000 m (L) x 56 mm (Dia) SWR
Spare Reel Drum Cap	1000m x 56mm each
Line Pull @ First Layer	150 tones
Brake Holding	200 T (Static)
Towing Pin	SWL 200 T, Electro Hydraulic
Shark Jaw	SWL 300 T, Electro-Hydraulic
Stern Roller	SWL 200 T, 5.0 m (L) x 1.6 m (Dia)

ACCOMODATION

Berths	3 x 1, 4 x 2, 8 x 4 Berths
Total Pax	43 + Hospital

EXTERNAL FIRE-FIGHTING EQUIPMENT

Fi-Fi Notation	Class 1 with Water Curtain All Round
Fi-Fi Monitors	2 x Fi-Fi Monitors, 1200 m ³ /hr, 120 m Throw Length
Fi-Fi Pump	2 x Fi-Fi Pumps, 1200 m ³ /hr

LIFE-SAVING EQUIPMENT

Life Rafts	4 x 25 Men, SOLAS Compliant
Rescue Boat c/w Davit	1 x 15 Men FRB inboard engine + 1 6 men with outboard engine

Particulars are believed to be correct but not guaranteed. Owners reserve the rights to amend the specifications without notifications. Particulars are entirely without warranty as to interested parties must inspect vessel's certificates, drawings or physical inspection of vessel.



AL HADAF
MARINE SERVICES

SPEED BOATS

SPEED BOATS	LOA(M)	YEAR BUILT	NO. OF PASSENGERS	SPEED	BHP
Target 1	9.30	2007	31	30 KNOTS	300 HP X2
Target 2	11.88	2016	30	25 KNOTS	315 HP X2
Target 3	11.89	2015	25	30 KNOTS	250 HP X2
Target 4	10.36	2014	24	30 KNOTS	250 HP X2
Target 5	9.50	2008	25	30 KNOTS	150 HP X2
Target 6	11.87	2015	25	30 KNOTS	300 HP X2
Target 7	10.97	2002	25	30 KNOTS	200 HP X2
Target 8	10.67	2010	25	37 KNOTS	150 HP X2
Target 9	11.27	2007	14	30 KNOTS	150 HP X2
Target 10	11.60	2012	10	20 KNOTS	315 HP X2
Target 11	4.88	2015	3	20 KNOTS	50 HP
Target 12	5.00	2019	3	20 KNOTS	70 HP



TARGET 1

PRINCIPLE PARTICULARS		MACHINERY	
VESSEL TYPE	SERVICE BOAT	MAIN ENGINES (2 NOS)	YAMAHA OUTBOARD ENGINES
OFFICIAL NUMBER	AC-8100	FUEL SPECIFICATION	PETROL
DATE OF BUILT	2007	ENGINE POWER	2 X 300HP
PLACE OF BUILT	AJMAN	MAXIMUM SPEED	25 KNOTS
HULL MATERIAL	FIBRE GLASS	ENGINE SERIAL NUMBER	6CE-1032279 6CF-1009720
DIMENSIONS		ACCOMODATION	
LENGTH OVERALL	9.30 M	CREW	2 CREW
BREADTH MOULDED	2.13 M	SEATING CAPACITY	31 PASSENGERS
DEPTH MOULDED	0.91 M	LIFE SAVING EQUIPMENT	
GROSS TONAGE	10	LIFE JACKETS	35 PCS
NET TONAGE	10	LIFE BOUYS	2 PCS
FIRE FIGHTING EQUIPMENT		FIRST AID KIT	1 PC KIT
PORTABLE FIRE EXTINGUISHER	1 X 2KG C02 1 X 6KG DCP	LIFE RAFTS	1PCS (8PERSON CAPACITY)
RADIO & NAVIGATION EQUIPMENT			
VHF RADIO	1 X GARMIN 110i	SEARCH LIGHT	1 PC
GPS	1 X RAYMARINE	NAVIGATION LIGHTS	2X GREEN LIGHT, 2X RED LIGHT
MAGNETIC COMPASS	1PC		

*Kindly note that information provided are to the best of our knowledge without guarantee



TARGET 2

PRINCIPLE PARTICULARS		MACHINERY	
VESSEL TYPE	SERVICE BOAT	MAIN ENGINE	YANMAR INBOARD ENGINES
OFFICIAL NUMBER	AC-8152	FUEL SPECIFICATION	DIESEL
DATE OF BUILT	2016	ENGINE POWER	2 X 315HP
PLACE OF BUILT	AJMAN	MAXIMUM SPEED	25 KNOTS
HULL MATERIAL	FIBRE GLASS	ENGINE SERIAL NUMBER	6LPA-STZP2-5080 6LPA-STZP2-5328
DIMENSIONS		ACCOMODATION	
LENGTH OVERALL	11.88 M	CREW	2 CREW
BREADTH MOULDED	3.05 M	SEATING CAPACITY	30 PASSENGERS
DEPTH MOULDED	1.09 M	LIFE SAVING EQUIPMENT	
GROSS TONAGE	10 TONS	LIFE JACKETS	32 PCS
NET TONAGE	10 TONS	LIFE BOUYS	2 PCS
FIRE FIGHTING EQUIPMENT		FIRST AID KIT	1 PC KIT
PORTABLE FIRE EXTINGUISHER	1 X 2KG CO2, 1 X 6KG DCP	LIFE RAFTS	2PCS (10PERSON), (15PERSON)
RADIO & NAVIGATION EQUIPMENT			
VHF RADIO	1 X ICOM-ICM323	SEARCH LIGHT	1 PC
GPS	1 X GARMIN 42CV	GENERATOR	KOHLER 10/N047415 (DIESEL)
MAGNETIC COMPASS	1PC	NAVIGATION LIGHTS	FULL SET X BATTERY OPERATED

*Kindly note that information provided are to the best of our knowledge without guarantee



TARGET 3

PRINCIPLE PARTICULARS		MACHINERY	
VESSEL TYPE	SERVICE BOAT	MAIN ENGINES (2 NOS)	YAMAHA OUTBOARD ENGINES
OFFICIAL NUMBER	AC-8248	FUEL SPECIFICATION	PETROL
DATE OF BUILT	2015	ENGINE POWER	2 X 250HP
PLACE OF BUILT	ABU DHABI, UAE	MAXIMUM SPEED	30 KNOTS
HULL MATERIAL	FIBRE GLASS	ENGINE SERIAL NUMBER	6 DY FL250GET 1002726Y 6 DX FL250GET 1006585Y
DIMENSIONS		ACCOMODATION	
LENGTH OVERALL	11.89 M	CREW	2 CREW
BREADTH MOULDED	3.04 M	SEATING CAPACITY	25 PASSENGERS
DEPTH MOULDED	0.91 M	LIFE SAVING EQUIPMENT	
GROSS TONAGE	10 TONS	LIFE JACKETS	25 PCS
NET TONAGE	10 TONS	LIFE BOUYS	2 PCS
FIRE FIGHTING EQUIPMENT		FIRST AID KIT	1 PC KIT
PORTABLE FIRE EXTINGUISHER	2 X 2KG DCP	LIFE RAFTS	N/A
RADIO & NAVIGATION EQUIPMENT			
VHF RADIO	1 X GARMIN VHF 110i	SEARCH LIGHT	1 PC
GPS	1 PC GARMIN	NAVIGATION LIGHTS	FULL SET
MAGNETIC COMPASS	1PC		

*Kindly note that information provided are to the best of our knowledge without guarantee



TARGET 4

PRINCIPLE PARTICULARS		MACHINERY	
VESSEL TYPE	SERVICE BOAT	MAIN ENGINES (2 NOS)	YAMAHA OUTBOARD ENGINE
OFFICIAL NUMBER	AC-8243	FUEL SPECIFICATION	PETROL
DATE OF BUILT	2014	ENGINE POWER	2 X 250HP
PLACE OF BUILT	ABU DHABI, UAE	MAXIMUM SPEED	30 KNOTS
HULL MATERIAL	FIBRE GLASS	ENGINE SERIAL NUMBER	1002936 1001351
DIMENSIONS		ACCOMODATION	
LENGTH OVERALL	10.36 M	CREW	2 CREW
BREADTH MOULDED	2.74 M	SEATING CAPACITY	24 PASSENGERS
DEPTH MOULDED	1.37 M	LIFE SAVING EQUIPMENT	
GROSS TONAGE	10 TONS	LIFE JACKETS	26 PCS
NET TONAGE	10 TONS	LIFE BOUYS	2 PCS
FIRE FIGHTING EQUIPMENT		FIRST AID KIT	1 PC KIT
PORTABLE FIRE EXTINGUISHER	2 X 2KG DCP	LIFE RAFTS	N/A
RADIO & NAVIGATION EQUIPMENT			
VHF RADIO	1 X GARMIN VHF 110i	SEARCH LIGHT	1 PC
GPS	1 PC GARMIN	NAVIGATION LIGHTS	FULL SET
MAGNETIC COMPASS	1PC		

* Kindly note that information provided are to the best of our knowledge without guarantee.



TARGET 5

PRINCIPLE PARTICULARS		MACHINERY	
VESSEL TYPE	SERVICE BOAT	MAIN ENGINES (2 NOS)	MERCURY OUTBOARD ENGINES
OFFICIAL NUMBER	AC-8257	FUEL SPECIFICATION	PETROL
DATE OF BUILT	2008	ENGINE POWER	2 X 150HP
PLACE OF BUILT	ABU DHABI, UAE	MAXIMUM SPEED	30 KNOTS
HULL MATERIAL	ALUMINUM	ENGINE SERIAL NUMBER	2B252314 2B378172
DIMENSIONS		ACCOMODATION	
LENGTH OVERALL	9.50 M	CREW	2 CREW
BREADTH MOULDED	3.45 M	SEATING CAPACITY	25 PASSENGERS
DEPTH MOULDED	0.45 M	LIFE SAVING EQUIPMENT	
GROSS TONAGE	10 TONS	LIFE JACKETS	27 PCS
NET TONAGE	10 TONS	LIFE BOUYS	2 PCS
FIRE FIGHTING EQUIPMENT		FIRST AID KIT	1 PC KIT
PORTABLE FIRE EXTINGUISHER	2 X 2KG DCP	LIFE RAFTS	N/A
RADIO & NAVIGATION EQUIPMENT			
VHF RADIO	1 X GARMIN VHF110i	SEARCH LIGHT	1 PC
GPS	1 PC GARMIN	NAVIGATION LIGHTS	FULL SET
MAGNETIC COMPASS	1PC		

*Kindly note that information provided are to the best of our knowledge without guarantee



TARGET 6

PRINCIPLE PARTICULARS		MACHINERY	
VESSEL TYPE	SERVICE BOAT	MAIN ENGINES (2 NOS)	YAMAHA OUTBOARD ENGINES
OFFICIAL NUMBER	AC-8309	FUEL SPECIFICATION	PETROL
DATE OF BUILT	2015	ENGINE POWER	2 X 300HP
PLACE OF BUILT	AJMAN	MAXIMUM SPEED	30 KNOTS
HULL MATERIAL	FIBRE GLASS	ENGINE SERIAL NUMBER	X1032937Y X10103504Y
DIMENSIONS		ACCOMODATION	
LENGTH OVERALL	11.80 M	CREW	2 CREW
BREADTH MOULDED	3.15 M	SEATING CAPACITY	25 PASSENGERS
DEPTH MOULDED	1.80 M	LIFE SAVING EQUIPMENT	
GROSS TONAGE	10 TONS	LIFE JACKETS	25 PCS
NET TONAGE	10 TONS	LIFE BOUYS	2 PCS
FIRE FIGHTING EQUIPMENT		FIRST AID KIT	1 PC KIT
PORTABLE FIRE EXTINGUISHER	2 X 2KG DCP	LIFE RAFTS	N/A
RADIO & NAVIGATION EQUIPMENT			
VHF RADIO	1 X GARMIN VHF110i	SEARCH LIGHT	1 PC
GPS	1 PC GARMIN	NAVIGATION LIGHTS	FULL SET
MAGNETIC COMPASS	1PC		

*Kindly note that information provided are to the best of our knowledge without guarantee



TARGET 7

PRINCIPLE PARTICULARS		MACHINERY	
VESSEL TYPE	SERVICE BOAT	MAIN ENGINES (2 NOS)	YAMAHA OUTBOARD ENGINES
OFFICIAL NUMBER	AC-8289	FUEL SPECIFICATION	PETROL
DATE OF BUILT	2002	ENGINE POWER	2 X 200HP
PLACE OF BUILT	ABU DHABI, UAE	MAXIMUM SPEED	30 KNOTS
HULL MATERIAL	FIBRE GLASS	ENGINE SERIAL NUMBER	6 DY FL250GET 1002726Y 6 DX FL250GET 1006585Y
DIMENSIONS		ACCOMODATION	
LENGTH OVERALL	10.97 M	CREW	1 CREW
BREADTH MOULDED	2.95 M	SEATING CAPACITY	25 PASSENGERS
DEPTH MOULDED	1.30 M	LIFE SAVING EQUIPMENT	
GROSS TONAGE	10 TONS	LIFE JACKETS	26 PCS
NET TONAGE	10 TONS	LIFE BOUYS	2 PCS
FIRE FIGHTING EQUIPMENT		FIRST AID KIT	1 PC KIT
PORTABLE FIRE EXTINGUISHER	2 X 2KG DCP	LIFE RAFTS	N/A
RADIO & NAVIGATION EQUIPMENT			
VHF RADIO	1 X GARMIN VHF110i	SEARCH LIGHT	1 PC
GPS	1 PC GARMIN	NAVIGATION LIGHTS	FULL SET
MAGNETIC COMPASS	1PC		

*Kindly note that information provided are to the best of our knowledge without guarantee



TARGET 8

PRINCIPLE PARTICULARS		MACHINERY	
VESSEL TYPE	SERVICE BOAT	MAIN ENGINES (2 NOS)	MERCURY OUTBOARD ENGINES
OFFICIAL NUMBER	AC-8425	FUEL SPECIFICATION	PETROL
DATE OF BUILT	2010	ENGINE POWER	2 X 150HP
PLACE OF BUILT	ABU DHABI, UAE	MAXIMUM SPEED	30 KNOTS
HULL MATERIAL	FIBRE GLASS	ENGINE SERIAL NUMBER	1B483866 1B460549
DIMENSIONS		ACCOMODATION	
LENGTH OVERALL	10.67 M	CREW	2 CREW
BREADTH MOULDED	3.05 M	SEATING CAPACITY	25 PASSENGERS
DEPTH MOULDED	1.22 M	LIFE SAVING EQUIPMENT	
GROSS TONAGE	10 TONS	LIFE JACKETS	27 PCS
NET TONAGE	10 TONS	LIFE BOUYS	2 PCS
FIRE FIGHTING EQUIPMENT		FIRST AID KIT	1 PC KIT
PORTABLE FIRE EXTINGUISHER	2 X 2KG DCP	LIFE RAFTS	N/A
RADIO & NAVIGATION EQUIPMENT			
VHF RADIO	1 X GARMIN VHF110i	SEARCH LIGHT	1 PC
GPS	1 PC GARMIN	NAVIGATION LIGHTS	FULL SET
MAGNETIC COMPASS	1PC		

*Kindly note that information provided are to the best of our knowledge without guarantee



TARGET 9

PRINCIPLE PARTICULARS		MACHINERY	
VESSEL TYPE	SERVICE BOAT	MAIN ENGINES (2 NOS)	MERCURY OUTBOARD ENGINES
OFFICIAL NUMBER	AC-5504	FUEL SPECIFICATION	PETROL
DATE OF BUILT	2007	ENGINE POWER	2 X 150HP
PLACE OF BUILT	ABU DHABI, UAE	MAXIMUM SPEED	30 KNOTS
HULL MATERIAL	FIBRE GLASS	ENGINE SERIAL NUMBER	2B057528 1B954004
DIMENSIONS		ACCOMODATION	
LENGTH OVERALL	11.27 M	CREW	2 CREW
BREADTH MOULDED	2.83 M	SEATING CAPACITY	14 PASSENGERS
DEPTH MOULDED	1.21 M	LIFE SAVING EQUIPMENT	
GROSS TONAGE	10 TONS	LIFE JACKETS	16 PCS
NET TONAGE	10 TONS	LIFE BOUYS	2 PCS
FIRE FIGHTING EQUIPMENT		FIRST AID KIT	1 PC KIT
PORTABLE FIRE EXTINGUISHER	2 X 2KG DCP	LIFE RAFTS	N/A
RADIO & NAVIGATION EQUIPMENT			
VHF RADIO	1 X GARMIN VHF 110i	SEARCH LIGHT	1 PC
GPS	1 PC GARMIN	NAVIGATION LIGHTS	FULL SET
MAGNETIC COMPASS	1PC		

*Kindly note that information provided are to the best of our knowledge without guarantee



TARGET 10

PRINCIPLE PARTICULARS		MACHINERY	
VESSEL TYPE	SERVICE BOAT	MAIN ENGINES (2 NOS)	YANMAR INBOARD ENGINE
OFFICIAL NUMBER	AC-8685	FUEL SPECIFICATION	DIESEL
DATE OF BUILT	2012	ENGINE POWER	2 X 315HP
PLACE OF BUILT	ABU DHABI, UAE	MAXIMUM SPEED	30 KNOTS
HULL MATERIAL	FIBRE GLASS	ENGINE SERIAL NUMBER	220440231 220401519
DIMENSIONS		ACCOMODATION	
LENGTH OVERALL	11.60 M	CREW	2 CREW
BREADTH MOULDED	3.00 M	SEATING CAPACITY	10 PASSENGERS
DEPTH MOULDED	0.55M	LIFE SAVING EQUIPMENT	
GROSS TONAGE	10 TONS	LIFE JACKETS	12 PCS
NET TONAGE	10 TONS	LIFE BOUYS	2PCS
FIRE FIGHTING EQUIPMENT		FIRST AID KIT	1 PC KIT
PORTABLE FIRE EXTINGUISHER	2 X 2KG DCP, 1 2KG AUTOMATIC F.EX	LIFE RAFTS	N/A
RADIO & NAVIGATION EQUIPMENT			
VHF RADIO	1 X GARMIN VHF110i	SEARCH LIGHT	1 PC
GPS	1 PC GARMIN	NAVIGATION LIGHTS	FULL SET
MAGNETIC COMPASS	1PC		

*Kindly note that information provided are to the best of our knowledge without guarantee



TARGET 11

PRINCIPLE PARTICULARS		MACHINERY	
VESSEL TYPE	SERVICE BOAT	MAIN ENGINE	YANMAR OUTBOARD ENGINE
OFFICIAL NUMBER	AC-8675	FUEL SPECIFICATION	DIESEL
DATE OF BUILT	2015	ENGINE POWER	36 HP
PLACE OF BUILT	ABU DHABI, UAE	MAXIMUM SPEED	20 KNOTS
HULL MATERIAL	RUBBER & FIBRE GLASS	ENGINE SERIAL NUMBER	-
DIMENSIONS		ACCOMODATION	
LENGTH OVERALL	4.88 M	CREW	1 CREW
BREADTH MOULDED	1.95 M	SEATING CAPACITY	3 PASSENGERS
DEPTH MOULDED	0.50 M	LIFE SAVING EQUIPMENT	
GROSS TONAGE	10 TONS	LIFE JACKETS	4 PCS
NET TONAGE	10 TONS	LIFE BOUYS	2 PCS
FIRE FIGHTING EQUIPMENT		FIRST AID KIT	1 PC KIT
PORTABLE FIRE EXTINGUISHER	1 X 2KG DCP	LIFE RAFTS	N/A
RADIO & NAVIGATION EQUIPMENT			
VHF RADIO	-	SEARCH LIGHT	N/A
GPS	-	NAVIGATION LIGHTS	FULL SET
MAGNETIC COMPASS	1PC		

*Kindly note that information provided are to the best of our knowledge without guarantee



TARGET 12

PRINCIPLE PARTICULARS		MACHINERY	
VESSEL TYPE	SERVICE BOAT / RUBBER BOAT	MAIN ENGINE	YAMAHA OUTBOARD ENGINE
OFFICIAL NUMBER	AC-8708	FUEL SPECIFICATION	PETROL
DATE OF BUILT	2019	ENGINE POWER	70HP
PLACE OF BUILT	RAS AL KHAIMA, UAE	MAXIMUM SPEED	20 KNOTS
HULL MATERIAL	RUBBER & FIBRE GLASS	ENGINE SERIAL NUMBER	6CJ-1083775
DIMENSIONS		ACCOMODATION	
LENGTH OVERALL	5.00 M	CREW	1 CREW
BREADTH MOULDED	2.00 M	SEATING CAPACITY	3 PASSENGERS
DEPTH MOULDED	0.65 M	LIFE SAVING EQUIPMENT	
GROSS TONAGE	10 TONS	LIFE JACKETS	4 PCS
NET TONAGE	10 TONS	LIFE BOUYS	2 PCS
FIRE FIGHTING EQUIPMENT		FIRST AID KIT	1 PC KIT
PORTABLE FIRE EXTINGUISHER	1 X 2KG DCP	LIFE RAFTS	N/A
RADIO & NAVIGATION EQUIPMENT			
VHF RADIO	-	SEARCH LIGHT	-
GPS	-	NAVIGATION LIGHTS	FULL SET
MAGNETIC COMPASS	1PC		

*Kindly note that information provided are to the best of our knowledge without guarantee



AL HADAF
MARINE SERVICES

UAE



Head Office
Al Dana Tower, Khalidiya
Abu Dhabi , UAE



P.O. Box 34919



(971) 2 681 22 70



(971) 2 681 40 58



chartering@alhadafmarine.ae



www.alhadafmarine.ae

EGYPT



Head Office
27 north choueifat st ,EL-Tagamoa
EL-khames, Cairo,Egypt



P.O. Box 34919



(202) 2 542 85 70



(202) 2 542 85 40



chartering@alhadafmarine.ae



www.alhadafmarine.ae

Call us on 02 6812270

We are dedicated to being the partner of choice by cultivating a work place that inspires excellence in our industry.



AL HADAF
MARINE SERVICES

www.alhadafmarine.ae